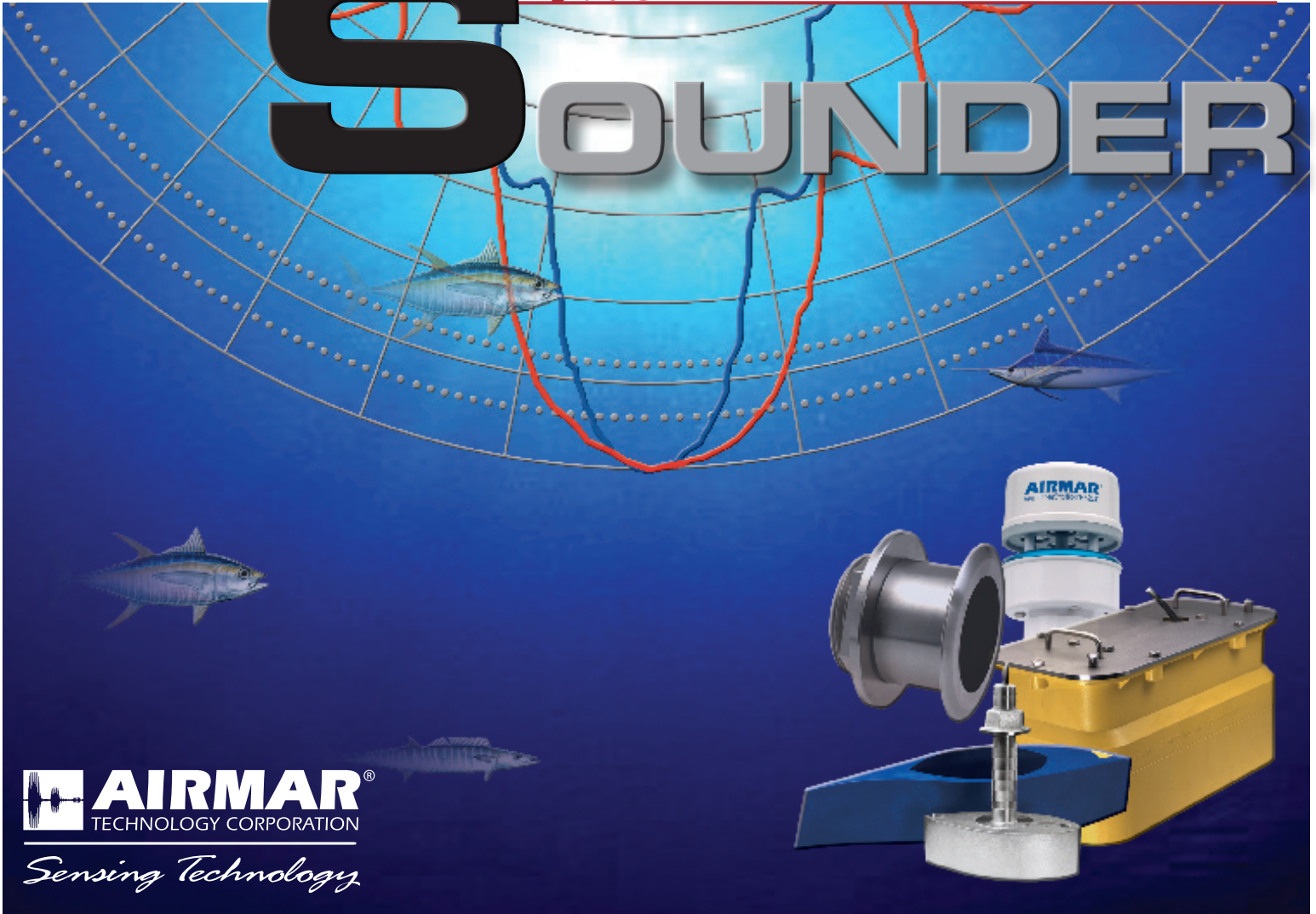


The SOUNDER



AIRMAR[®]
TECHNOLOGY CORPORATION
Sensing Technology

Welcome

The Sounder is Airmar's quarterly newsletter that presents our newest innovative products, offers hands-on installation tips, explains our quality features, and acquaints OEMs, installers, and the press with our company's resources.

Winter 2009 Features

- Shipment update—CA500 Underwater Camera and H2183 Heading Sensor
- New P48W Transom-Mount
- New 1 kW Transom-Mounts

If you know someone who would like to receive this informative newsletter, or if you would like to unsubscribe, please e-mail mreedenaer@airmar.com.

Now Shipping—CA500 Color Underwater Camera

Giving you a real-time view of the underwater world!

- Range of applications: fishing, diving, surveillance/safety, or commercial use.
- Connects to ANY video display with an NTSC or PAL input.
- Low-lux (0.01), wide angle, 90° lens for superior viewing—even in low-light conditions.
- Sapphire viewing window is highly resistant to scratching and cracking.
- Comes with Airmar's high-impact, plastic, bronze, or stainless steel thru-hull, valve housing.



H2183 Heading Sensor

The advantage is the accuracy!

- Comprised of a 3-axis solid-state compass, 3-axis accelerometer, and a 3-axis rate gyro—a first in the recreational marine industry.
- Outputs Heading, Rate-of-Turn, and Pitch & Roll.
- Better than 1° static-heading accuracy.
- Best-in-class 2° dynamic-heading accuracy.
- Fast, 10 Hertz output in both NMEA 0183 and NMEA 2000® formats for autopilots and radar overlays.
- Innovative circular design for simple mounting and alignment on ANY angled bulkhead.



New, P48W, Wide-Beam, Transom-Mount

Airmar's new 200 kHz Transom-Mount is designed to help freshwater and in-shore saltwater tournament anglers see more fish on their fishfinder. The P48W's innovative design allows fishermen to manually change the transducer's beam direction based on specific fishing conditions. When the beam is in the default port-starboard position, a wide 38° x 12° beam will mark more fish and bait to the port and starboard of the boat. Turn the beam to the bow-stern position, and the 12° x 38° beam will detect changes in bottom composition as the boat moves forward.

The highly sensitive 200 kHz ceramic—the heart of the P48W—can easily detect the slightest changes in bottom composition. And the integrated temperature sensor quickly relays changes in surface temperature to the connected fishfinder display. If transom-mounting the P48W is not an option, the unit can also be installed as a trolling-motor mount as shown in the attached photo.

The P48W is available now for 200kHz mid-range fishfinder models from Lowrance, Raymarine, Garmin, and Humminbird.



New 1 kW Transom-Mounts

The TM258, TM260, and TM270W will help serious fishermen get the best performance from virtually all 600 W or 1 kW sounders. This trio of transom-mounts delivers crystal-clear, bottom imaging at speeds up to 40 knots. They are designed for easy installation on outboard and inboard/outboard powered vessels with transom angles from 2 to 20 degrees. Each model features a newly-designed kick-up bracket that locks in the up position—without damaging the transom if the transducer gets struck by an object. Airmar's fast-response, water-temperature sensor, designed to quickly relay even the slightest changes in surface temperature, is standard. This lets skippers concentrate fishing efforts around temperature breaks that harbor bait and gamefish.

The TM258 model is the entry-level, 50/200 kHz transducer for all types of inshore and offshore fishing. The internal construction is based on the popular, B258 thru-hull. With an elliptical beam that covers a large bottom area, the TM258 shows excellent detail when trolling inshore and offshore or when used for bottom/structure fishing in waters up to 1,600 feet deep.

The TM260 model is a top-of-the-line, broadband transducer with a wide, 19-degree beam at 50kHz and a narrow, 6-degree beam at 200 kHz. Its internal construction is based on the popular, B260 thru-hull. This model is the wide and narrow beam choice for blue-water and bottom fishermen alike. The 50 kHz array is best for blue-water trolling and deep-water wreck fishing. The broadband, 200 kHz ceramic pulses a focused, narrow beam with excellent target separation between individual fish and the seabed for bottom fishing at depths from 5 to 300 feet.



TM258



TM260

The TM270W model takes Airmar's SS270W, wide-beam, dual-frequency performance and brings it into the realm of transom-mounts. With identical, 25-degree beams at 50 kHz and 200kHz, the superior ability to mark bait and gamefish in shallow to mid-water depths makes the TM270W great for marlin and tuna fishing offshore. The TM270W's wide-beam also excels at marking baitfish and trolling gear when downrigger fishing in salt-water or deep-water lakes. Its vast, bottom coverage in shallow to mid-water also makes the TM270W ideal for finding wrecks and structure when vertical jigging, allowing fishermen to put their jigs in the strike zone.

These three new transom mounts will be available for purchase in the month of March.



TM270W



Sensing Technology

www.airmar.com