

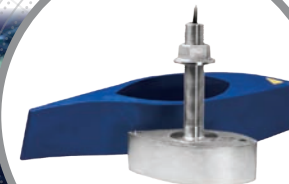
Wide-Beam Transducers

P48W

TM270W

SS264W

SS270W



100 W Adjustable Wide-Beam

- Adjustable beam settings
- Easily change the beam direction by turning the insert
- Wide port-starboard position (38° x 12°)
- Bow-stern position (12° x 38°)

- 100 Watts
- Depth and Temperature
- Transom-Mount or Trolling-Motor Mounting
- 200 kHz
- Q at 200 kHz—6
- 7.6 m (25') cable with OEM connector
- Beamwidth: 200 kHz—38° x 12° (port-starboard)
- Maximum Depth Range: 200 kHz—91 m to 152 m (300' to 500')
- Boat Size: 5 m to 7 m (17' to 22')

1 kW, High-Definition Digital Broadband

- Designed for tuna and marlin fishing
- Identical 25° beams at 50 kHz and 200 kHz
- 4 times wider at 200 kHz than all other 1 kW transducers

- 1,000 Watts
- Depth and fast-response temp. sensor
- Transom-Mount, Urethane Housing
- 50/200 kHz
- Q at 50 kHz—4
- Q at 200 kHz—15
- 12 m (39') cable with OEM connector
- Beamwidth: 50 kHz—25°
- 200 kHz—25°
- Maximum Depth Range: 50 kHz—400 m to 610 m (1,350' to 2,000')
- 200 kHz—100 m to 180 m (330' to 600')
- Boat Size: Outboards and I/O's up to 12 m (40')



1 kW, High-Definition Digital Broadband

- Two transducers: 50 kHz wide-beam 200 kHz **wide-beam**
- Designed for tuna and marlin fishing
- Transducers can be purchased as a pair for dual-frequency operation or individually as single-frequency units

- 1,000 Watts
- Depth and fast-response temp. sensor
- Two, Thru-Hull, Stainless Steel Housings
- Separate transducers for 50 kHz & 200 kHz
- Q at 50 kHz—4
- Q at 200 kHz—15
- 12 m (39') cable with OEM connector
- Beamwidth: 50 kHz—25°
- 200 kHz—25°
- Maximum Depth Range: 50 kHz—400 m to 610 m (1,350' to 2,000')
- 200 kHz—100 m to 180 m (330' to 600')
- Boat Size: 8 m to 12 m (25' to 40')



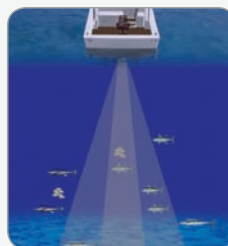
1 kW, High-Definition Digital Broadband

- Designed for tuna and marlin fishing
- Identical 25° beams at 50 kHz and 200 kHz
- 4 times wider at 200 kHz than all other 1 kW transducers

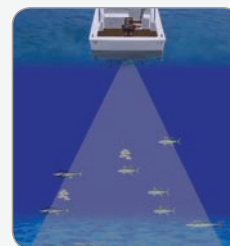
- 1,000 Watts
- Depth and fast-response temp. sensor
- Thru-Hull, Stainless Steel Housing
- 50/200 kHz
- Q at 50 kHz—4
- Q at 200 kHz—15
- 12 m (39') cable with OEM connector
- Beamwidth: 50 kHz—25°
- 200 kHz—25°
- Maximum Depth Range: 50 kHz—400 m to 610 m (1,350' to 2,000')
- 200 kHz—100 m to 180 m (330' to 600')
- Boat Size: 9 m (30') and up

Wide-Beam Transducers

- Wide-beam is ideal for marking more bait and gamefish
- Excellent fish detection in shallow and mid-water depths to 122 m (400')
- Bait and game fish marking in shallow to mid-water
- Blue-water trolling using both 50 kHz and 200 kHz
- Wreck and structure finding on the continental shelf
- Vertical deep jigging
- Downrigger fishing in saltwater or deep-water lakes



Narrow-Beam Transducer



Wide-Beam Transducer

AIRMAR
TECHNOLOGY CORPORATION

Sensing Technology

www.airmar.com

P48W

TM270W

SS264W

SS270W



200 kHz	
Number of Elements and Configuration	
Beamwidth (@-3 dB)	38° x 12°
RMS Power (W)	100 W
TVR	153 dB
RVR	-192 dB
FOM	-39 dB
Q	6
Impedance	1,100 Ω

50 kHz-AWIq / 200 kHz-BM		
Number of Elements and Configuration		
Beamwidth (@-3 dB)	25°	25°
RMS Power (W)	1 kW	1 kW
TVR	161 dB	167 dB
RVR	-175 dB	-194 dB
FOM	-19 dB	-27 dB
Q	4	15
Impedance	200 Ω	90 Ω

50 kHz-AWIq / 200 kHz-BM		
Number of Elements and Configuration		
Beamwidth (@-3 dB)	25°	25°
RMS Power (W)	1 kW	1 kW
TVR	161 dB	167 dB
RVR	-175 dB	-194 dB
FOM	-19 dB	-27 dB
Q	4	15
Impedance	200 Ω	90 Ω

50 kHz-AWIq / 200 kHz-BM		
Number of Elements and Configuration		
Beamwidth (@-3 dB)	25°	25°
RMS Power (W)	1 kW	1 kW
TVR	161 dB	167 dB
RVR	-175 dB	-194 dB
FOM	-19 dB	-27 dB
Q	4	15
Impedance	200 Ω	90 Ω

BEAM DIAMETER VS DEPTH	
Depth	200 kHz
9 m (30')	2 m x 6 m (6' x 21')
30 m (100')	6 m x 21 m (21' x 69')
122 m (400')	26 m x 84 m (84' x 276')

BEAM DIAMETER VS DEPTH		
Depth	50 kHz	200 kHz
9 m (30')	4 m (13')	4 m (13')
30 m (100')	14 m (45')	14 m (45')
122 m (400')	55 m (180')	55 m (180')
305 m (1,000')	137 m (450')	137 m (450')

BEAM DIAMETER VS DEPTH		
Depth	50 kHz	200 kHz
9 m (30')	4 m (13')	4 m (13')
30 m (100')	14 m (45')	14 m (45')
122 m (400')	55 m (180')	55 m (180')
305 m (1,000')	137 m (450')	137 m (450')

BEAM DIAMETER VS DEPTH		
Depth	50 kHz	200 kHz
9 m (30')	4 m (13')	4 m (13')
30 m (100')	14 m (45')	14 m (45')
122 m (400')	55 m (180')	55 m (180')
305 m (1,000')	137 m (450')	137 m (450')

