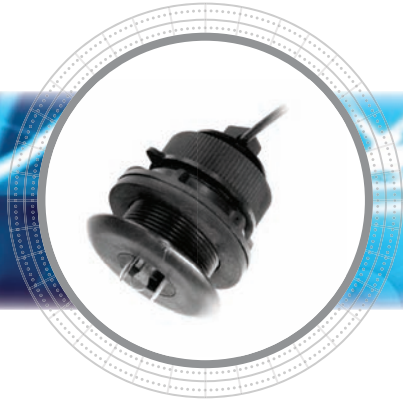
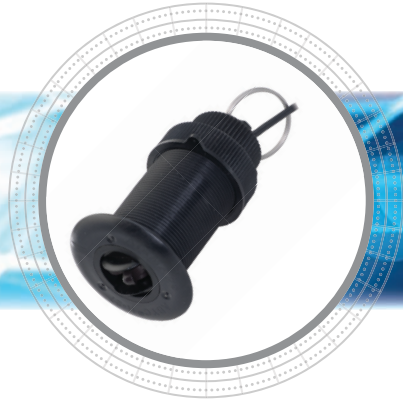


## Speed Sensors

### ST300



### ST850



### CS4500



#### Shorty™ Sensor, Thru-Hull

- Analog output
- Speed and Temperature
- Speed Range: 2 to 45 knots (2 to 52 MPH)
- Self-closing valve
- Thru-Hull, Low-Profile, Plastic Housing
- 10 m (33') cable length
- Supply Voltage: 5 VDC to 25 VDC
- Supply Current: 100 mA at 12 VDC
- Hole Diameter: 51 mm (2")

#### Low-Profile, Thru-Hull

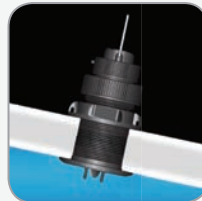
- Analog output
- Speed and Temperature
- Speed Range: 2 to 45 knots (2 to 52 MPH)
- Self-closing valve
- Thru-Hull, Low-Profile, Plastic, Bronze, or Stainless Steel Housings
- 9 m (30') cable length
- Supply Voltage: 5 VDC to 25 VDC
- Supply Current: 100 mA at 12 VDC
- Hole Diameter: 51 mm (2")

#### Ultrasonic, Thru-Hull

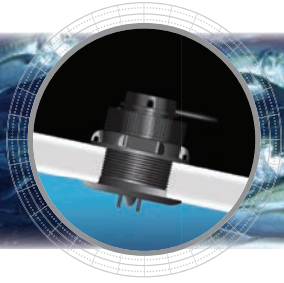
- Analog or NMEA 0183 output
- Speed and Temperature
- Speed Range: 0.1 to 40 knots (0.1 to 46 MPH)
- Thru-Hull, Low-Profile, Plastic or Bronze Housings
- 10 m (33') cable length
- Temperature Range:  
0°C to 40°C (32°F to 104°F)
- Supply Voltage: 10 VDC to 15 VDC
- Supply Current: 155 mA at 12 VDC
- Hole Diameter: 51 mm (2")

### Speed Sensors

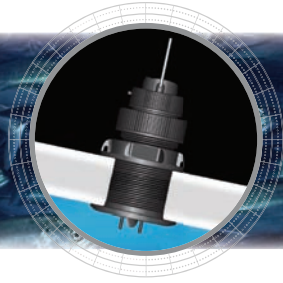
- **Designed for use with all types and sizes of sailboats and powerboats**
- Self-closing valve eliminates flow of water into the hull when paddlewheel insert is removed
- Hull Deadrise Angle: 0° to 7°
- Flush-mount and beveled-edge housings available
- Analog Output Wiring:
  - Red: Positive Voltage
  - Bare: Ground
  - Green: Signal
  - White: Temp
  - Brown: Temp



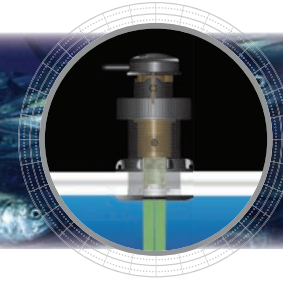
# ST300



# ST850



# CS4500



## SPECIFICATIONS

<b>Speed Range</b>	2 to 45 knots (2 to 52 MPH)
<b>Supply Voltage</b>	5 VDC to 25 VDC
<b>Supply Current</b>	100 mA at 12 VDC
<b>Hole Diameter</b>	51 mm (2")

## SPECIFICATIONS

<b>Speed Range</b>	2 to 45 knots (2 to 52 MPH)
<b>Supply Voltage</b>	5 VDC to 25 VDC
<b>Supply Current</b>	100 mA at 12 VDC
<b>Hole Diameter</b>	51 mm (2")

## SPECIFICATIONS

<b>Speed Range</b>	0.1 to 40 knots (0.1 to 46 MPH)
<b>Supply Voltage</b>	10 VDC to 15 VDC
<b>Supply Current</b>	155 mA at 12 VDC
<b>Hole Diameter</b>	51 mm (2")
<b>Frequency</b>	4.5 MHz

