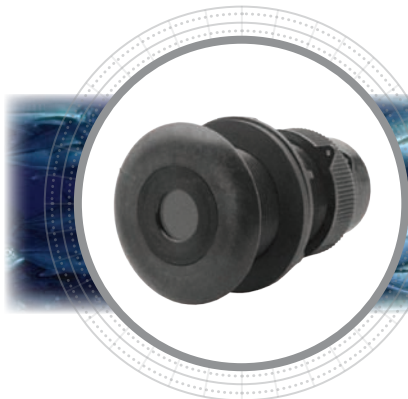


Specialty Products

CA500



Underwater Camera

- Low lux (0.01) for day or night viewing
- PAL or NTSC output versions available
- Thru-Hull Plastic Housing
- Waterproof
- Sapphire viewing window
- Retractable insert
- Self-closing water valve
- Patent pending

Applications

- Sportfishing
- Research and survey
- Scuba diving
- Search and recovery
- Commercial fishing
- Surveillance and safety

SB264



1 kW Switchbox

- Use when adding the SS264 200 kHz wide-beam with an existing 1 kW transducer
- Allows you to switch between narrow or wide-beam 200 kHz frequencies
- Panel-mount waterproof switch
- For use with all 1 kW fishfinders

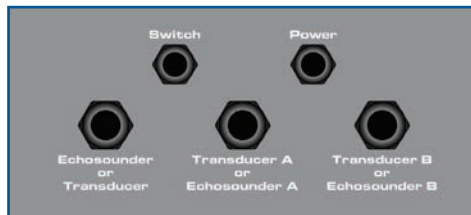


SB260



1 kW Switchbox

- Multi-functional switchbox:
 - Switches 2 transducers with 1 fishfinder or
 - Switches 2 fishfinders with 1 transducer
- Panel-mount waterproof switch
- For use with all 1 kW fishfinders



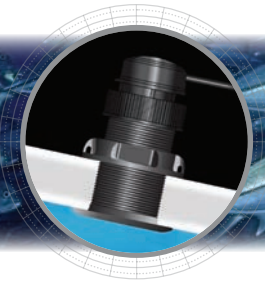
Diplexer



External Diplexer Box

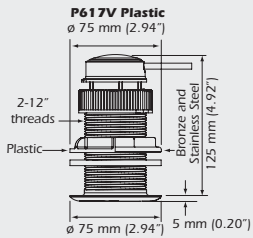
- Converts dual-transmission-line transducers to a single-transmission-line
- For use with 1 kW sounders only

CA500

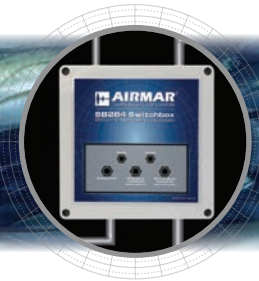


SPECIFICATIONS

Camera: 1/3" Sony CCD
PAL (H x V): 500 x 582, 625 lines, 50 field per second
NTSC (H x V): 510 x 492, 525 lines, 60 field per second
Operating Temperature: -10°C to 50°C (14°F to 122°F)
Storage Temperature: -20°C to 60°C (-4°F to 140°F)
Sync System: Internal synchronization
Minimum Illumination: 0.5 day or 0.01 night lux
Resolution: 420 TV lines
Angle of View in Water: 92° diagonal
Focal Length: 3.6 mm (0.14")
Aperture: F 2.0
Built-In Lens: 4.3 mm (0.17") cone pinhole lens
S/N Ratio: >46 dB
White Balance: 1 Vp-p 75 ohms negative
Operating Voltage: 10 VDC to 15 VDC (100 mA)
Supply Voltage: 9 VDC to 16 VDC
Standard Cable Length: 20 m (66')
Weight:
 —0.9 kg (2.0 lb)—Plastic
 —1.9 kg (4.2 lb)—Bronze and Stainless Steel
CE Regulations: Complies to IERC945



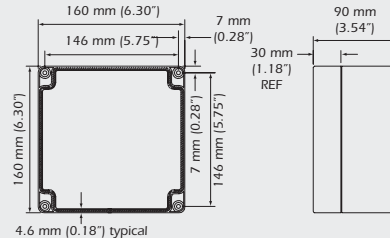
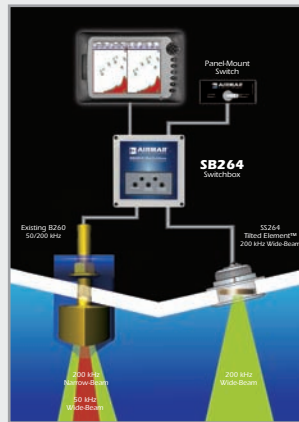
SB264



SPECIFICATIONS

Operating Voltage: 9 VDC to 30 VDC

SB264 Switchbox Installation



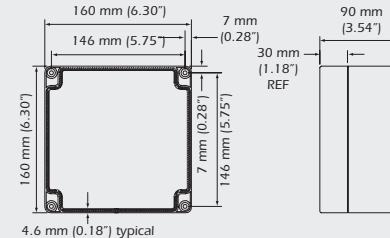
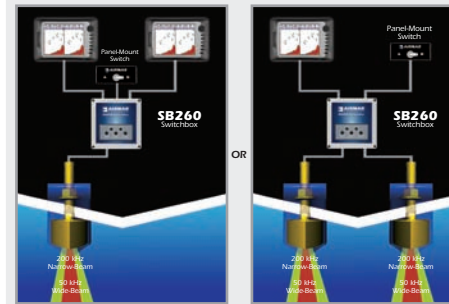
SB260



SPECIFICATIONS

Operating Voltage: 9 VDC to 30 VDC

SB260 Switchbox Installations



Diplexer



SPECIFICATIONS

Wiring:
 8— Temperature: White
 7— + High-Frequency: Blue
 6— - High-Frequency: Black
 5— Transducer ID®: Orange
 4— All Bare Wires: Ground
 (C44-01 has 3. Cut off fourth bare wire in green foil)
 3— - Low-Frequency: Black and White Stripe
 2— + Low Frequency: C335—Blue and White Stripe
 2— + Low-Frequency: C44-01—Yellow
 1— Temperature: Brown

