

# M89



## Affordable 2 kW Performance!

The new M89 packs value into a 50 kHz and 200 kHz, high-performance, 2 kW transducer. Aimed at sport and commercial fishing vessels over 9 m (30'), this powerhouse gives any 1 kW or 2 kW fishfinder the clarity and detail needed to help reel in the big ones!

## Broaden Your Catch

Featuring Airmar's exclusive Broadband Ceramic Technology, the 200 kHz element gives broadband results—higher resolution without sacrificing sensitivity. The 15-element, 50 kHz array gives an edge in deep-water to 1,219 m (4,000').

## Streamlined and Precise

The highly sensitive temperature sensor alerts one of temperature breaks, making it possible to find game fish. Additionally, the M89's streamlined shape with a High-Performance Fairing travels the bottom over 30 knots (34 MPH).



## 2 kW Broadband

Thru-Hull, External-Mount Transducer

### Features

- Streamlined shape with fairing provides excellent performance at speeds over 30 knots (34 MPH)
- Depth and new fast-response water-temperature sensor
- Interfaces to all 1 kW and 2 kW echosounders
- Unique design allows the transducer connector to pass through the stuffing tube
- Available with a diplexer for single-transmission-line fishfinders and without a diplexer for dual-transmission-line fishfinders
- Seal cast urethane housing
- Xducer ID® feature

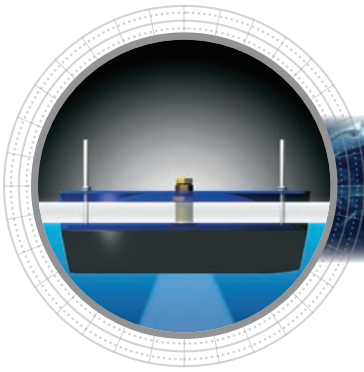
### Options

- External speed and temperature sensor



*Sensing Technology*

[www.airmar.com](http://www.airmar.com)



## Technical Information

### 50 kHz-AIq / 200 kHz-BFIq

Number of Elements and Configuration		
Beamwidth (@-3 dB)	8° x 14°	5°
RMS Power (W)	2 kW	2 kW
TVR	170 dB	176 dB
RVR	-172 dB	-178 dB
FOM	-9	-6
Q	6	7

### MAXIMUM DEPTH RANGE

50 kHz	200 kHz
735 m to 1,176 m (2,500' to 4,000')	235 m to 353 m (800' to 1,200')

### BEAM DIAMETER VS DEPTH

Depth	50 kHz	200 kHz
30 m (100')	4 m x 8 m (14' x 25')	2.7 m (9')
122 m (400')	17 m x 30 m (56' x 98')	11 m (35')
244 m (800')	34 m x 60 m (112' x 196')	21 m (70')
305 m (1,000')	43 m x 75 m (140' x 246')	27 m (88')

### TRANSDUCER COMPARISON

Model	Power	Rating	Performance Increase
B45 B744V B744VL	600 W	Good	Benchmark model for comparison
B258	1 kW	Better	25 times more sensitive at 50 kHz 16 times more sensitive at 200 kHz
B260 SS260	1 kW	Best	50 times more sensitive at 50 kHz 13 times more sensitive at 200 kHz
<b>M89</b> R99	<b>2 kW</b>	<b>Superb</b>	<b>200 times more sensitive at 50 kHz</b> <b>32 times more sensitive at 200 kHz</b>
R209 R309	3 kW	Ultimate	400 times more sensitive at 50 kHz 32 times more sensitive at 200 kHz

Due to the wide beam of the SS270W, it has been omitted from the table.

### SPECIFICATIONS

**Weight:** 17.8 kg (39 lb)

**Hull Deadrise:** 0° to 25°

**Acoustic Window:** Epoxy/urethane

### DIMENSIONS

